

UNSHIELDED SMD POWER INDUCTORS / FPI TYPE

FEATURES

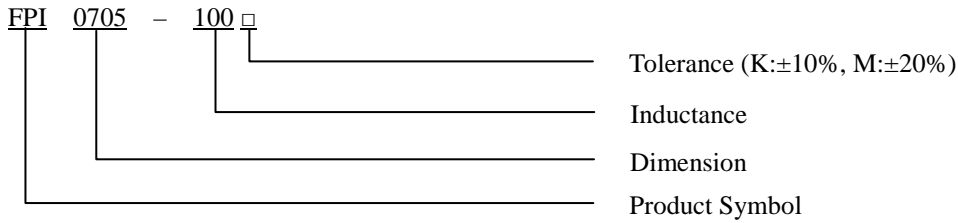
- ◆ Silver Plated Type
- ◆ High power and high saturation
- ◆ Ideal inductors for DC/DC conversion



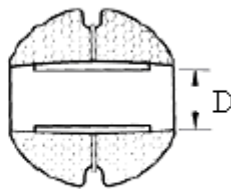
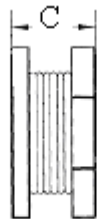
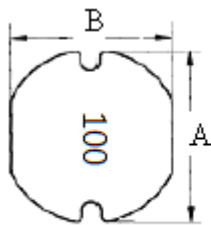
APPLICATIONS

- ◆ Power supply for VTRs.
- ◆ Portable communication equipment.
- ◆ Notebook PCs.
- ◆ LCD televisions.
- ◆ DC/DC converters, etc.

ORDERING CODE



DIMENSIONS (UNIT: mm)



A	7.8 ± 0.3	m/m
B	7.0 ± 0.3	m/m
C	5.0 ± 0.3	m/m
D	2.1 (REF)	m/m

UNSHIELDED SMD POWER INDUCTORS / FPI TYPE

ELECTRICAL CHARACTERISTICS FOR FPI0705

Part No.	Inductance (uH)	RDC (Ω)	IDC (A)
FPI0705-1R0 □	1.0	0.020	12.00
FPI0705-1R5 □	1.5	0.024	8.40
FPI0705-2R2 □	2.2	0.028	6.80
FPI0705-3R3 □	3.3	0.031	6.50
FPI0705-3R9 □	3.9	0.033	6.00
FPI0705-4R7 □	4.7	0.035	5.50
FPI0705-5R6 □	5.6	0.037	5.20
FPI0705-6R8 □	6.8	0.040	4.90
FPI0705-8R2 □	8.2	0.050	3.80
FPI0705-100 □	10	0.070	3.50
FPI0705-120 □	12	0.080	3.30
FPI0705-150 □	15	0.090	3.10
FPI0705-180 □	18	0.100	2.90
FPI0705-220 □	22	0.130	2.30
FPI0705-270 □	27	0.140	2.20
FPI0705-330 □	33	0.150	2.10
FPI0705-470 □	47	0.180	1.80
FPI0705-560 □	56	0.240	1.55
FPI0705-680 □	68	0.280	1.40
FPI0705-820 □	82	0.370	1.20
FPI0705-101 □	100	0.430	1.10
FPI0705-121 □	120	0.470	1.00
FPI0705-151 □	150	0.640	0.95
FPI0705-181 □	180	0.710	0.85
FPI0705-221 □	220	0.960	0.80
FPI0705-271 □	270	1.110	0.70
FPI0705-331 □	330	1.260	0.60
FPI0705-471 □	470	1.600	0.50
FPI0705-561 □	560	1.800	0.43
FPI0705-681 □	680	2.000	0.40
FPI0705-821 □	820	2.570	0.37
FPI0705-102 □	1000	4.000	0.35

* 100uH 以上 Test Frequency : 1KHZ/1V

* 100uH 以下 Test Frequency : 2.52MHZ/1V

CORE MASTER ENTERPRISE CO., LTD.



<http://www.coremaster.com.tw>